

# REB Nest



Mixing life with magnificence

# REB Nest

Life shines when you have reasons to smile! When you are offered homes with lots of lung spaces at City Suburbs or its vicinity. It thrills to draw on a new lifestyle with splendid infrastructure around oneself with enough recreation and rejuvenation. And doing business or commercial enterprise is just a opportunity thrust in!

REB Nest is a 5 floors residential apartment with commercial openings at the ground floor locate at Kottara Chowki, a prominent junction. Apartments are closer to city and its intrinsic advantages and with enhanced business opportunities. The place is closer to New Mangalore Port & industrial houses on the one side and Bijai & Lalbagh on the other side leading to the main city. Infosys campus, Schools, Colleges, Stadium, Shopping, local markets, library and recreation spots lie closer to the apartment. The place while immensely convenient for a home, also suitable for business/commerical openings due to excellent transportation network and civic amenities. Panambur beach lies at a distance of 3 kms.



**You thought of home!!  
And got into business!!!**





## Specification

- | Foundation with the Pile pillars
- | RCC structure
- | Branded vitrified flooring for the flat
- | Granite flooring for common area
- | Car Wash outlet
- | Electric wiring used Branded cable V-Guard /  
Phinolex / Anchor
- | Concealed wiring with modular switches
- | Branded bathroom fittings Jaguar / Parryware
- | Branded sanitary fittings Hindware / Parryware
- | Hot and cold water mixer
- | Branded wall tiles & floor tiles for Bathroom
- | 24hrs. Generator Backup
- | RCC door frames for Bathroom with superior  
quality flush doors
- | Main door frame & door will be of Premium  
quality wood
- | All door frame will be of Premium quality wood
- | Covered Car Parking with extra cost
- | Washing machine point in utility area
- | A.C. Provision & points in master bedroom
- | Branded putty finished Emulsion paintings
- | Television & Telephone point in living room

## Amenities

- | Super Market / Bank
- | Spacious Visitors lobby
- | Visitors car parking
- | Party Area in Terrace
- | Car Wash outlet
- | One automatic lifts of 8 passengers capacity
- | Security room in ground floor
- | Two sided staircase
- | 24 Hours corporation water
- | Separate Borewell water
- | A.C. Provision for all Master Bedrooms
- | Underground water sump
- | Lightening arrest
- | Fire safety system

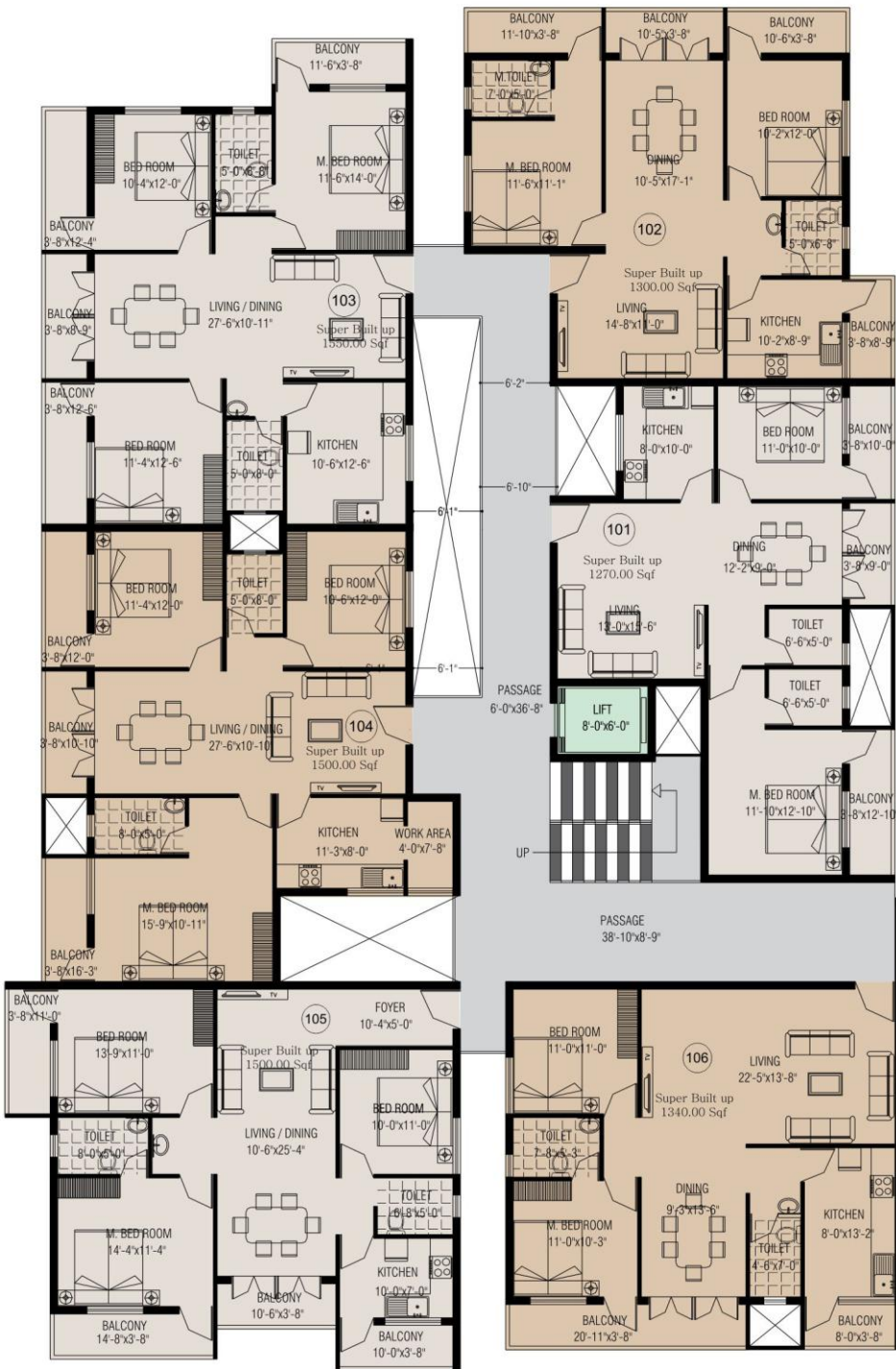
**When you feel secure, success dwells!**

Rai Estates and Builders have delivered successful projects which are well received by the clients. It remains a policy with the builders to identify best locations and to provide something unique and distinct for the buyers at highly competitive prices suited for the class budget. Our team is well versed in quality construction with standard materials used and verified at all stages of construction. The apartments are well designed to accommodate lots of lung space and they are built in an area which gives lots of free space and this is done in consideration of green initiatives for a healthy and active lifestyle. It is thus choosing a business address while also ensuring a dream home where life takes an upward look. An upcountry destination with all the specialities of city life. You cannot decide without it!



# 1st Floor Plan

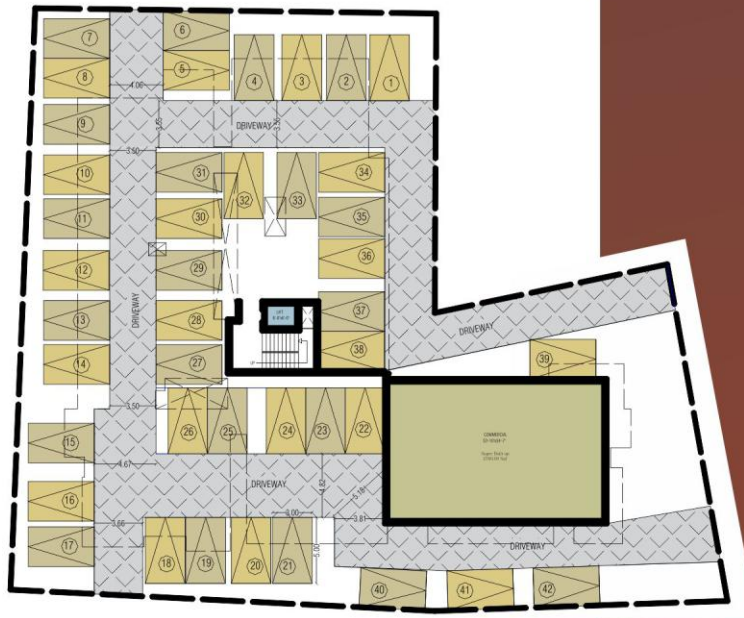
FLAT.NO	AREA
101	1270.00SQ.F
102	1300.00SQ.F
103	1550.00SQ.F
104	1500.00SQ.F
105	1500.00SQ.F
106	1340.00SQ.F
SHOP	2760.00SQ.F



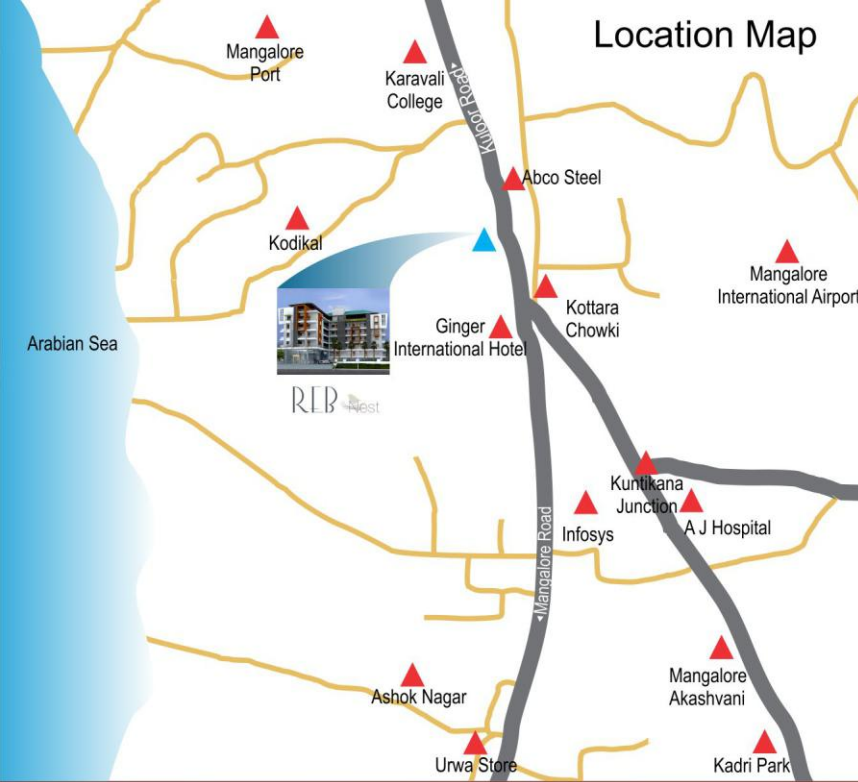


## Typical Second to Fifth Floor

FLAT.NO	AREA
201	1320.00SQ.F
202	1350.00SQ.F
203	1610.00SQ.F
204	1550.00SQ.F
205	1550.00SQ.F
206	1370.00SQ.F
207	1320.00SQ.F
208	1350.00SQ.F



## Car Parking



### COMPLETED PROJECT



Commercial Complex  
Kottara Chowki  
Mangalore



Glory Apartment  
Urwa Store  
Mangalore

### ONGOING PROJECT



Commercial Complex  
Thokkottu  
Mangalore



Kambla Heights  
Kadri Kambla  
Mangalore

Promoters



**RAI ESTATES AND BUILDERS Pvt. Ltd.**  
**RAI COMMERCIALS AND BUILDERS**



D.No. 2-17-1461/4

Bejai, Kavoor Road, Mangalore - 575004  
Mob : 09448380969, 09449080969  
Tel : 0824-2222143, 4277925, 2222993, 2222998  
Website : [www.raiestatesandbuilders.com](http://www.raiestatesandbuilders.com)  
Email : [raiestatesandbuilders@yahoo.com](mailto:raiestatesandbuilders@yahoo.com)

Consulting Engineer  
**Subramanya**  
Facility  
Mannagudda, Mangalore

Structural Consultant  
**Vimal Anil**  
Sterling Chamber, M.G. Road  
Mangalore - 575 003